

MONOLITHIC HOUSE

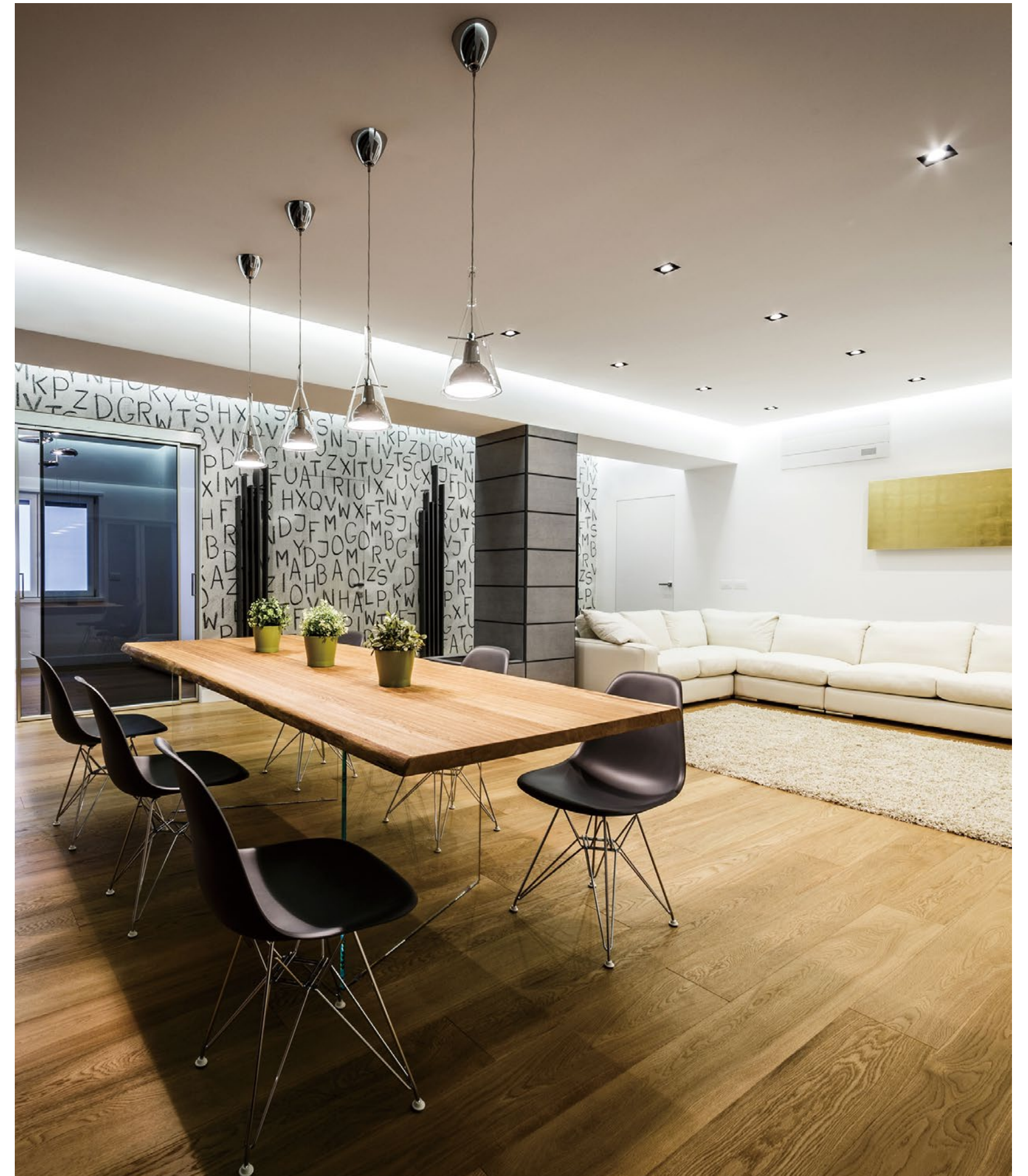
The Monolithic House is an apartment located in Castrovillari in southern Italy that got its name from the creative concept behind the project: explorations with the volumetric subtractions of a monolithic block. The majestic views of the Pollino massif mountains, clearly visible from the luminous windows of the apartment, led to the choice of stone as the conceptual raw material. In addition to stone, the other predominant natural material is wood, which warms the environment from the entrance, a place immediately enveloped in a surreal atmosphere with a rain of Swarovski crystals adorning the walls.

The project is a clear example of minimalist inspiration. In fact, reducing to the bare essence is a concept used not only in the functional division of the spaces that revolve around the open plan but also in the use of integrated elements in the environment of the architecture. The main active element of the interior design around is the

monolithic block, the stone wall's partition between kitchen and living room, characterized by a window performing the dual function of table and support plane. The bathrooms are the triumph of total white, one featuring damask textures, the other one with curved reliefs.

The careful use of lighting enhances the rigor of spaces, intensifying the volumes especially at the entrance, where a floating ceiling, pierced by a bright cut, introduces dynamism to the other environments. The choice of minimalist design elements as the total white—the wallpaper with contemporary lettering, the handmade furniture, and the ethereal glass walls—creates a visual balance, a hierarchical order forming visual weight that is easy to read.

Location | Castrovillari, Italy **Area** | 1830 square feet (170 square meters) **Completion** | 2014
Design | Brain Factory - Architecture & Design **Photography** | Marco Marotto





View of monolithic block



Window in kitchen



Above: Bathroom
Left: Hallway near living room